

## Pantheon Arms DOLOS/Prometheus

Modification instructions for use with Lage Manufacturing MAX-11/15, MAX-11A1/15 and MAX-10/15

---



DOLOS TRI-LUG as provided by Pantheon Arms.



Align rail on DOLOS with rail on upper receiver.



Using an Exacto Knife, scribe a line along the profile of the upper receiver where the lug on the DOLOS interferes with the upper from fitting.

---



Scribe mark.



Close up of scribe mark.

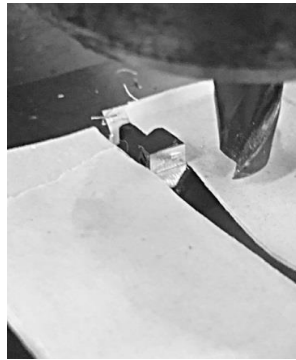


Apply a couple of layers of masking tape to protect the adjoining surfaces.

---



Use a milling machine to mill away material. As an alternative, use a file.



Milling complete.

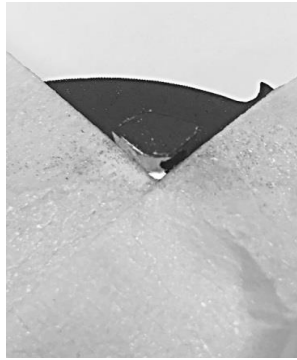


Re-apply a couple of layers of masking tape to protect the adjoining surfaces.

---



Use a jeweler's file to finish profile and add a radius to the corner.



Radius filed.



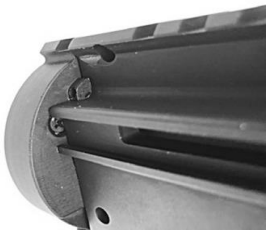
Tape the other lug and file a radius at the corner. Check fit the TRI-LUG to the upper multiple times and continue re-profiling the lugs with the file until it fits.



Finished profiling.



Touch up exposed aluminum with Birchwood Casey Super Black.



DOLOS TRI-LUG installed showing proper fit.

